



WEGC Range Safety Presentation



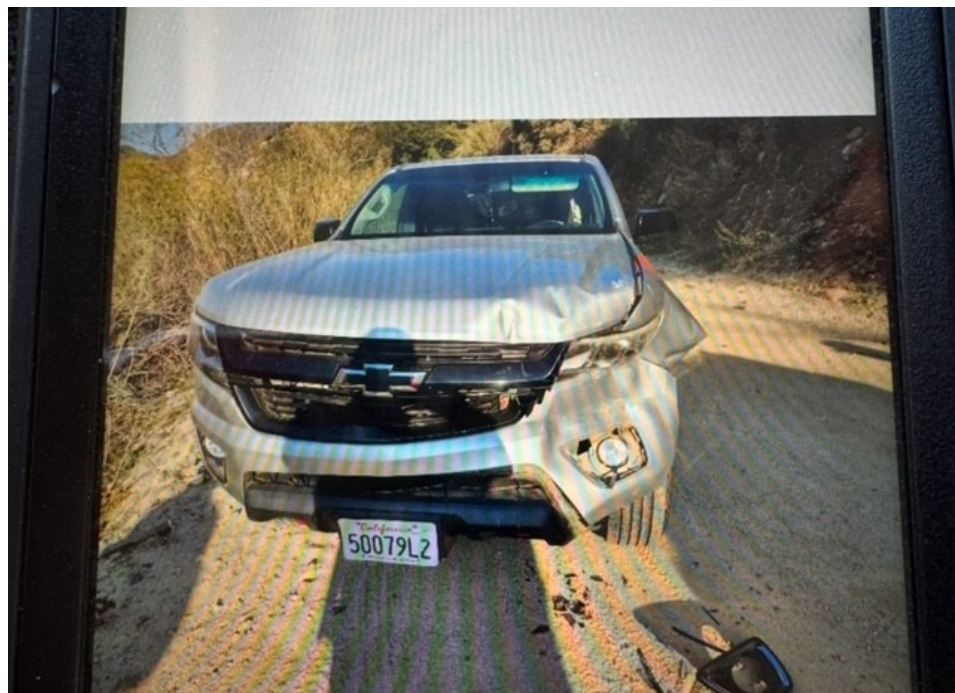
How to get there



Creek conditions, line to call in for status: (909) 921-3359



Challenge members at a closed gate; code security





Top Gun bay

WEST END GUN CLUB

UPPER RANGE

SHOTGUN RANGE

TRAP & SKEET OPEN 8am
2nd Sunday - 4th Sunday
1st Saturday - 3rd Saturday/Limited
Members Welcome
2nd Wednesday - 4th Wednesday
\$7 Members / \$8 Guests

300yd. RIFLE RANGE

OPEN 7am
Monday
Tuesday
Thursday
Friday



Hours of operation long range and shotgun range



Main line procedures for when range staff are present and not present

Full members use the two boxes to sign their guests in after hours; or when range staff is not present!





Road to upper range and hours of upper ranges



325, 450, and 500 yard ranges



Operational policy for all three



Road to shotgun and rifle



Impact view from impact



Shotgun range and parking



Youth rimfire .22



Times and rules



Back bays for long range





Additional back bays



Questions?